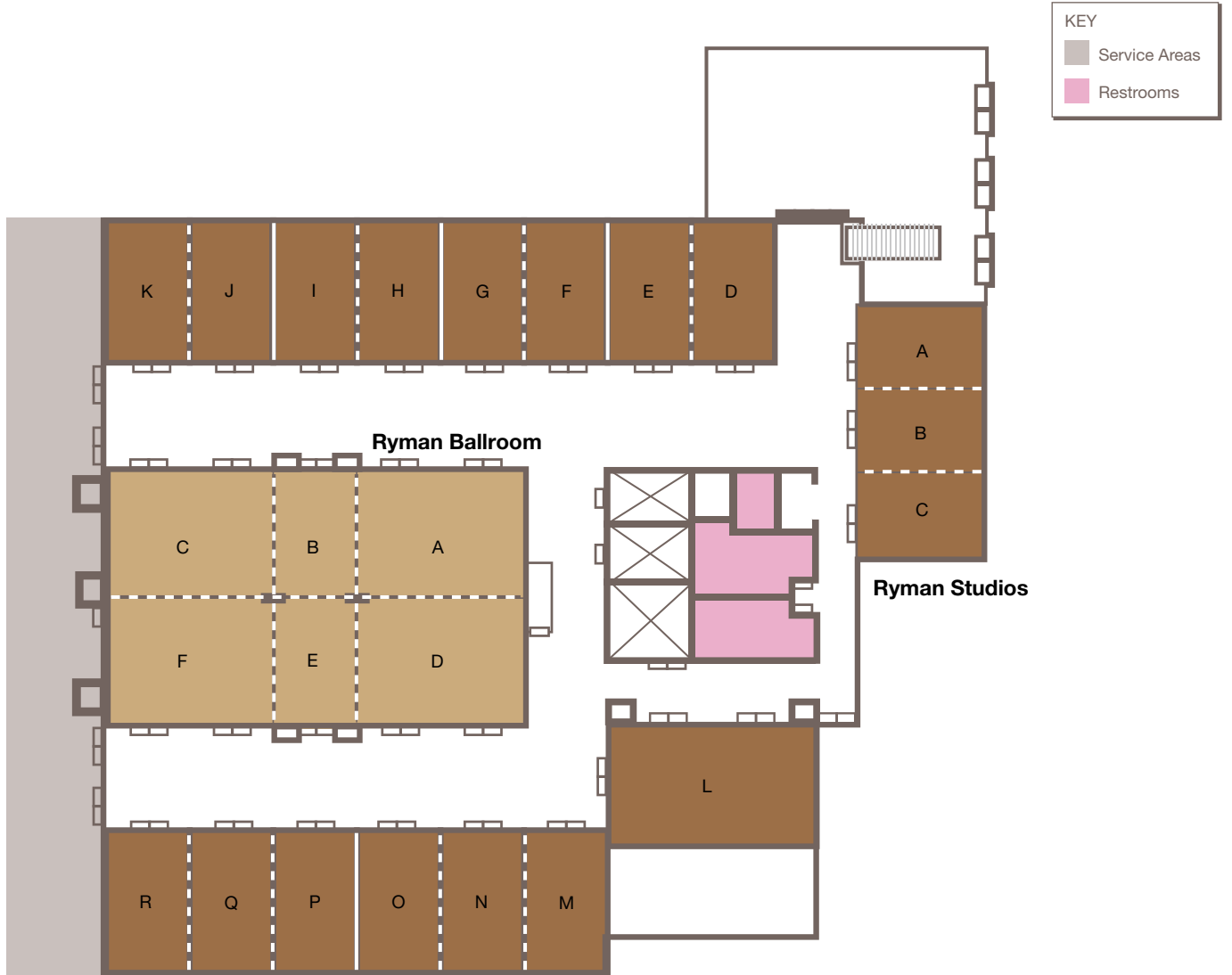


# Ryman Ballroom / Studios

Convention Center | Level 0



	SQUARE FEET	THEATER	CLASSROOM	CONFERENCE / HOLLOW SQUARE	U-SHAPE	ROUNDS OF 10	RECEPTION	LENGTH	WIDTH	HEIGHT
<b>Ryman Ballroom and Studios</b>										
<b>Ryman Ballroom</b>	<b>6,033</b>	<b>756</b>	<b>456</b>			<b>390</b>	<b>548</b>	<b>99' 7"</b>	<b>60' 7"</b>	<b>13'</b>
Ryman Ballroom A	1,204	144	66	28	30	60	109	30' 5"	39' 7"	13'
Ryman Ballroom B	598	56	30	16	21	20	54	30' 5"	19' 8"	13'
Ryman Ballroom C	1,224	144	63	28	30	60	111	30' 5"	40' 3"	13'
Ryman Ballroom D	1,194	144	63	28	30	60	109	30' 2"	39' 7"	13'
Ryman Ballroom E	593	56	30	16	21	20	54	30' 2"	19' 8"	13'
Ryman Ballroom F	1,214	136	63	28	30	60	110	30' 2"	40' 3"	13'
<b>Ryman Studio A/B/C</b>	<b>1,663</b>	<b>156</b>	<b>90</b>	<b>46</b>	<b>51</b>	<b>90</b>	<b>151</b>	<b>59'</b>	<b>28'</b>	<b>11' 5"</b>
Ryman Studio A	554	59	24	16	21	30	50	19' 2"	29' 2"	11' 5"
Ryman Studio B	554	54	24	16	21	30	50	19' 9"	29' 3"	11' 5"
Ryman Studio C	554	61	24	16	21	30	50	19' 8"	29' 4"	11' 5"
<b>Ryman Studio D/E</b>	<b>1,172</b>	<b>136</b>	<b>60</b>	<b>28</b>	<b>33</b>	<b>60</b>	<b>107</b>	<b>29' 9"</b>	<b>39' 2"</b>	<b>11' 5"</b>
Ryman Studio D	595	72	24	16	21	30	54	29' 9"	19' 9"	11' 5"
Ryman Studio E	577	72	30	16	21	30	52	29' 9"	19' 3"	11' 5"
<b>Ryman Studio F/G</b>	<b>1,166</b>	<b>136</b>	<b>60</b>	<b>28</b>	<b>33</b>	<b>60</b>	<b>106</b>	<b>29' 9"</b>	<b>39'</b>	<b>11' 5"</b>
Ryman Studio F	580	72	24	16	21	30	53	29' 9"	19' 4"	11' 5"
Ryman Studio G	586	72	24	16	21	30	53	29' 9"	19' 6"	11' 5"
<b>Ryman Studio H/I</b>	<b>1,172</b>	<b>136</b>	<b>60</b>	<b>28</b>	<b>36</b>	<b>60</b>	<b>107</b>	<b>29' 9"</b>	<b>39' 6"</b>	<b>11' 5"</b>
Ryman Studio H	586	72	24	16	21	30	53	29' 9"	19' 6"	11' 5"
Ryman Studio I	586	72	24	16	21	30	53	29' 9"	19' 6"	11' 5"
<b>Ryman Studio J/K</b>	<b>1,187</b>	<b>136</b>	<b>60</b>	<b>28</b>	<b>33</b>	<b>60</b>	<b>108</b>	<b>29' 9"</b>	<b>39' 7"</b>	<b>11' 5"</b>
Ryman Studio J	586	72	24	16	21	30	53	29' 9"	19' 6"	11' 5"
Ryman Studio K	601	72	24	16	21	30	54	29' 9"	20' 1"	11' 5"
<b>Ryman Studio L</b>	<b>1,438</b>	<b>133</b>	<b>72</b>	<b>34</b>	<b>45</b>	<b>80</b>	<b>131</b>	<b>29'</b>	<b>49' 7"</b>	<b>11' 5"</b>
<b>Ryman Studio M/N/O</b>	<b>1,733</b>	<b>200</b>	<b>90</b>	<b>46</b>	<b>48</b>	<b>90</b>	<b>158</b>	<b>29' 9"</b>	<b>58' 5"</b>	<b>11' 5"</b>
Ryman Studio M	571	72	24	16	21	30	52	29' 9"	19' 3"	11' 5"
Ryman Studio N	579	72	24	16	21	30	53	29' 9"	19' 6"	11' 5"
Ryman Studio O	579	72	24	16	21	30	53	29' 9"	19' 6"	11' 5"
<b>Ryman Studio P/Q/R</b>	<b>1,758</b>	<b>200</b>	<b>99</b>	<b>46</b>	<b>51</b>	<b>90</b>	<b>160</b>	<b>29' 9"</b>	<b>59' 3"</b>	<b>11' 5"</b>
Ryman Studio P	579	72	24	16	21	30	53	29' 9"	19' 3"	11' 5"
Ryman Studio Q	579	72	24	16	21	30	53	29' 9"	19' 6"	11' 5"
Ryman Studio R	596	72	24	16	21	30	54	29' 9"	20' 1"	11' 5"

Capacities shown in this book are maximum for each room, with no staging or audio-visual, and should be used for reference only. Room capacities will be diminished based on your staging and audio-visual needs.